

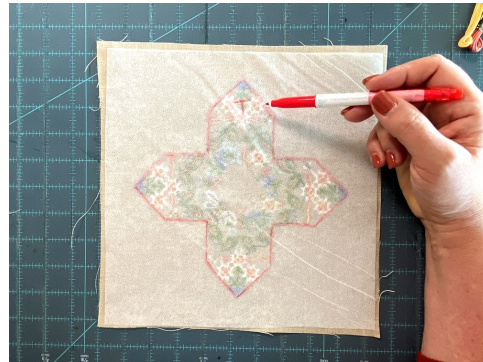


This Bee's Got Knees - Finishing Tutorial

©2025 Hands On Design, LLC: Images & instruction are the property of Hands On Design, LLC - Please do NOT share, copy, or post these in a blog or video.



1. Gather your completed stitching, lightweight fusible interfacing, remaining DMC threads, sharp needle (chenille or embroidery) & roving. You will also need an iron (silk setting), fabric scissors, & a Friction pen (or heat erasable pen) plus a ruler, rotary cutter & mat as desired.

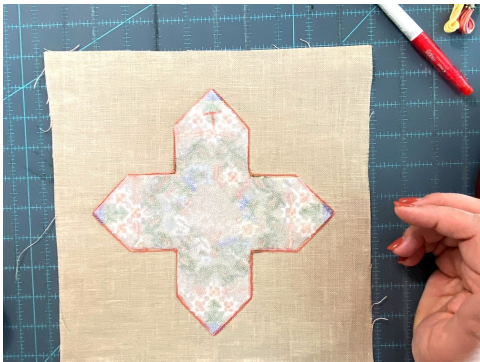


2. Place the fusible ('nubby' side down) on top of the backside of the stitching.

- Trace all around the pincushion just inside the backstitch line.
- Mark the top tab on both the interfacing & the linen/aida to help placement of cut interfacing.



3. A close up of how the trimmed fusible should look on the backside of the stitching.



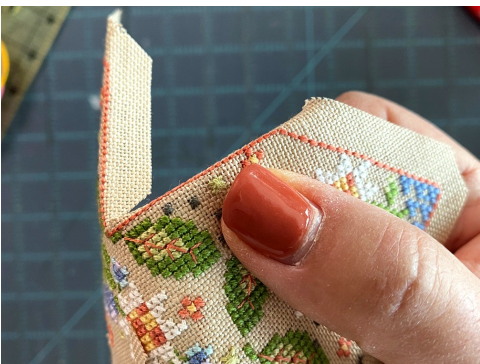
4. Iron fusible into place on the back side of the stitching.



5. Trim the linen to 1/2" from the backstitching.



6. Carefully cut or snip into the 4 inside corners. Cut to just a few linen threads away from the backstitch line.



7. Finger press the linen selvage to the backside of the stitching along the backstitch line. The backstitch line should 'pop' to the top.



8. Finger press the outside point by folding the tip 1st then the diagonal edges as if mitering the corner.



9. Pincushion once the edges have all been finger pressed.



This Bee's Got Knees - Finishing Tutorial

©2025 Hands On Design, LLC: Images & instruction are the property of Hands On Design, LLC - Please do NOT share, copy, or post these in a blog or video.



10. Thread up with DMC color of your choice: 2 strands with a knot in the end or 1 strand loop method.

- Anchor the thread on the back of the stitched piece near an inside corner, through the fusible.



11. Bring your needle & thread to the front side of your stitching through the hole in the inside corner where the backstitch line changes direction.



12. Lace the sides together by running the needle & thread through the matched up backstitches (do not pierce the linen).



13. Lace the vertical sides together then continue to lace the diagonal backstitches for the pincushion base.



14. Stop lacing once you reach the tip of the points on the base.

- Place a knot through the last bit of lacing (in the seam you created), secure your thread & trim.



15. Repeat steps 10-14 for the remaining sides. **BEFORE** you close up the final diagonal edge, grab your wool roving.



16. Cut & fluff the roving before you fill your pincushion.

- Once you have filled your pincushion to the desired firmness, lace the final edge closed.



17. Run needle & thread through the linen points to bring the bottom of the pincushion together.



18. Your completed pincushion!

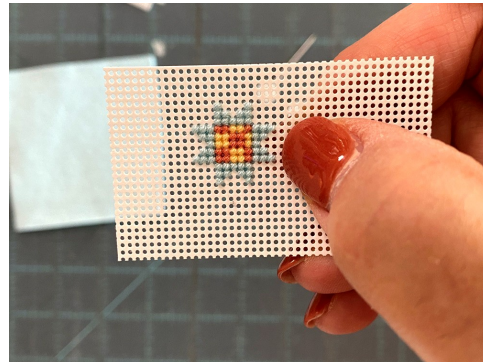


This Bee's Got Knees - Perforated Pins

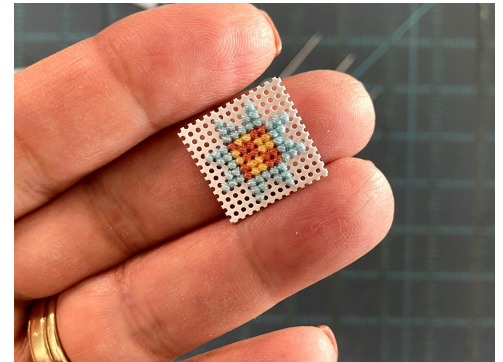
©2025 Hands On Design, LLC: Images & instruction are the property of Hands On Design, LLC - Please do NOT share, copy, or post these in a blog or video.



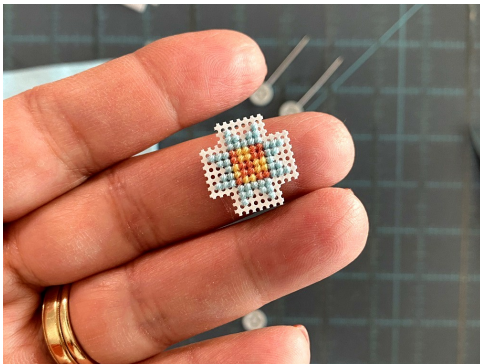
1. Gather your perforated paper stitches, small bits of woolfelt, tacky spray or glue, flathead quilting pins & sharp scissors. You will also need a spray box & scrap paper or cardboard if you are using Tacky Spray.



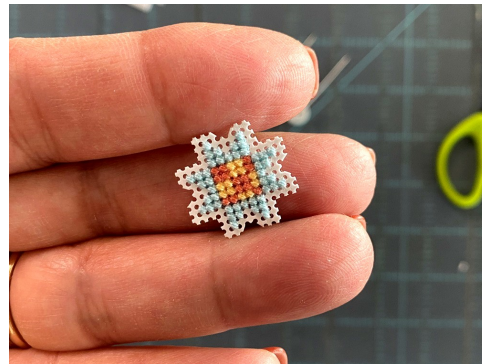
2. Trim the stitched motifs. I will show you how I trim the details in a step by step approach.



3. 1st cut 1 block away from the outer most points of the stitched motif.



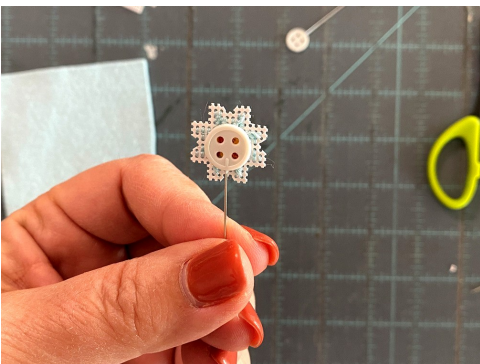
4. 2nd cut into the next 'larger' sections.



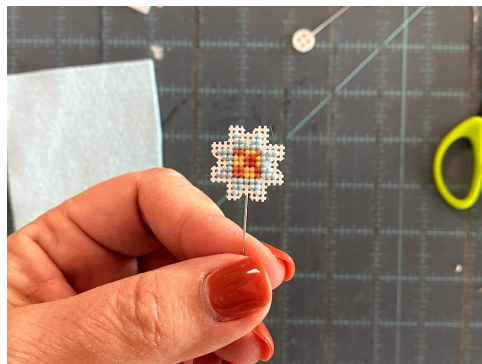
5. 3rd catch the small detail sections.



6. Double check that your trimmed motif will be larger than the pin head.



7. Place the trimmed motif stitching side down in a cardboard tray or box. Spray a light layer over the entire stitched piece, Carefully place pin into the adhesive.



8. A view from the front side.

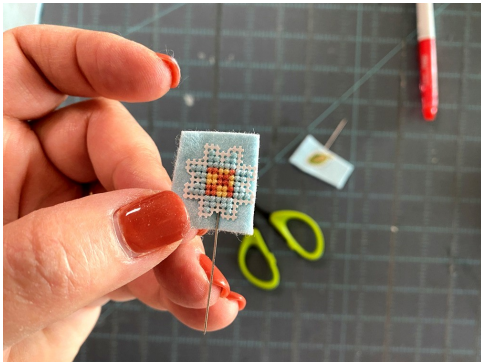


9. The exposed paper will still be tacky. Spray just a bit more adhesive on the pin head. (use a piece of cardboard or paper to shield the pin shaft from the spray)



This Bee's Got Knees - Perforated Pins

©2025 Hands On Design, LLC: Images & instruction are the property of Hands On Design, LLC - Please do NOT share, copy, or post these in a blog or video.



10. Give the adhesive some time to dry. Trim the woolfelt with sharp scissors. Trim it in a similar manner as you did the paper motif to get all of the details.



11. Here's a close up of the leaf pin.



12. A look at this fun trio of pins!



Thank you for coming to class at the Spring Mingle! It was a joy to spend time with you in class & introduce you to a new finishing idea.

I look forward to seeing your stitch progress & your finish progress!

As always, tag me in your photos—I love to ooh & aah!

Let's 'Mingle' again sometime soon!

Enjoy the Stitch,

Cathy



copyright 2025 Hands On Design, LLC