

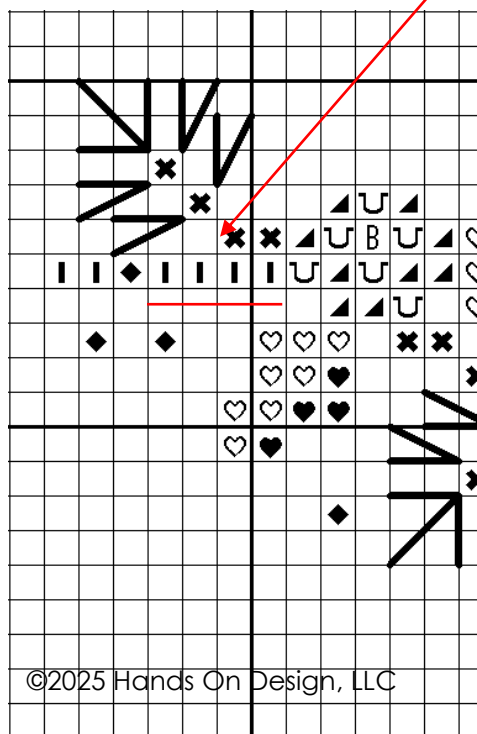
Gather at the Manger — *chart correction*

This correction is for the Christmas Rose Garden Border if you plan to stitch all 3 sections together as 1 long sampler.



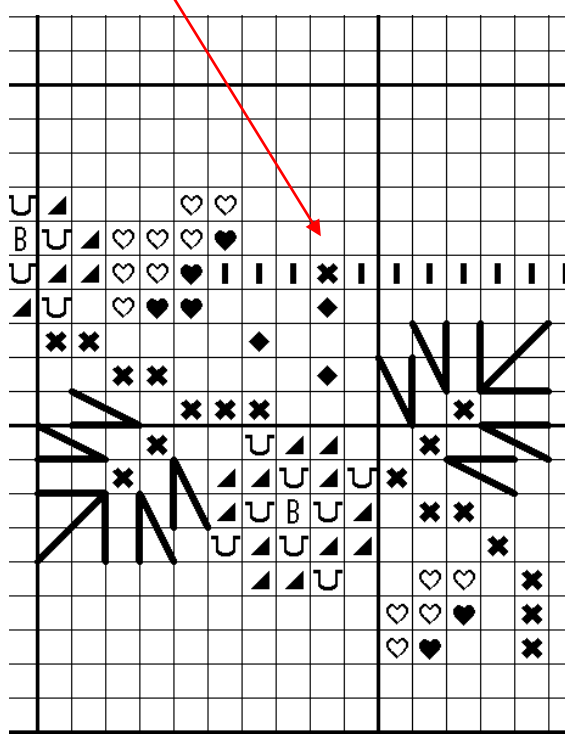
The corrected chart has been emailed to those that purchased the PDF version at The Jingle Ball. The chart will be corrected when it comes out later for general release.

Cathy—Hands On Design



Arrows point to the corrected area—this is where the left side of the charted border begins.

The original chart had 3 squares using the | symbol—there should be 4 (underlined in red).



Arrows point to the corrected area—this is 3 garland grouping (shepherd's & sheep)

The original chart showed the symbol for the color 535 and should be 3862. (this color will help show you how to place the shepherd & his staff).