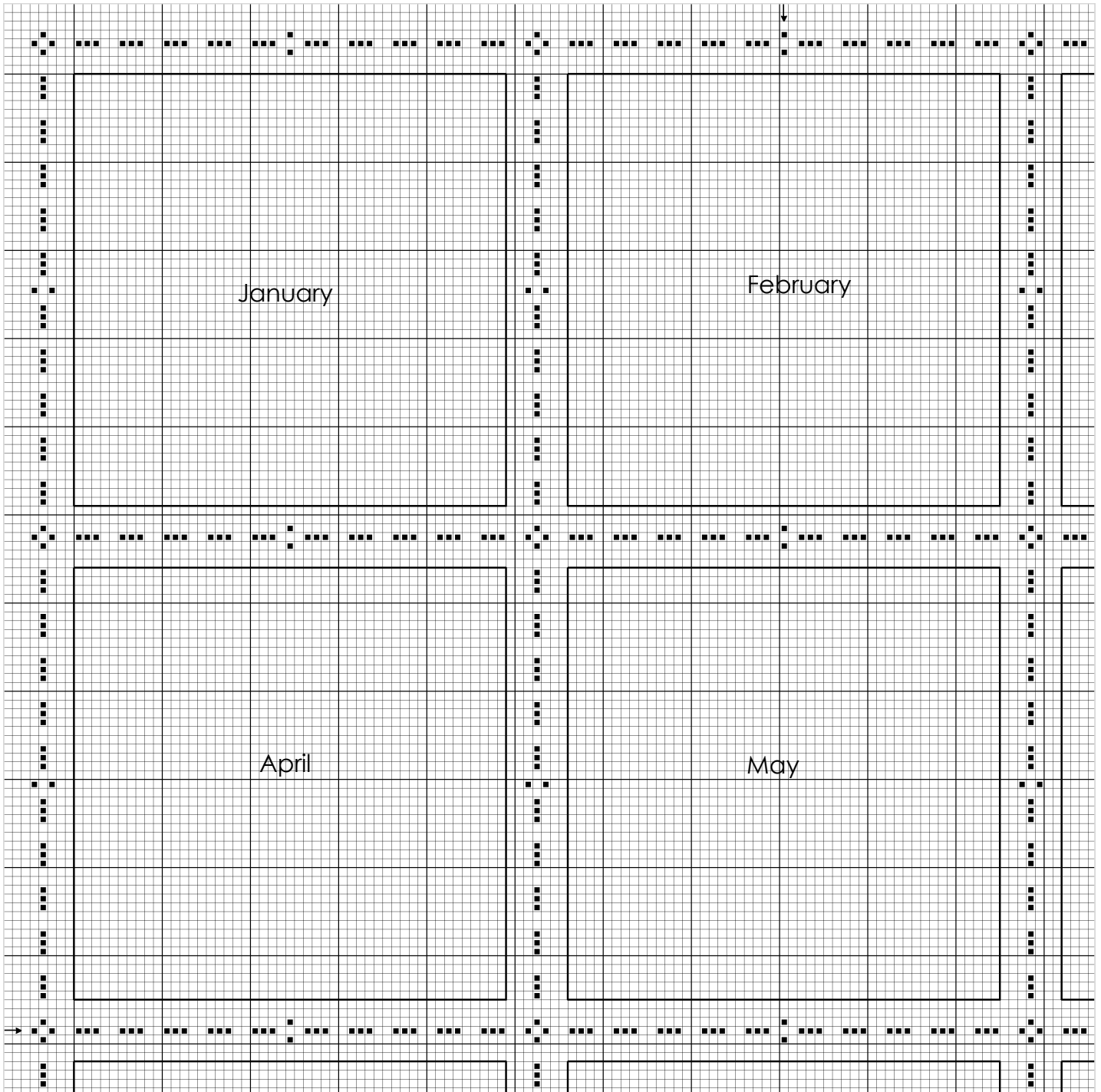




Season 2—A Year of Celebrations border

Stitched 2 over 2 with 2 strands Classic Colorworks Black Coffee on 32ct Driftwood—
Fabrics by Stephanie. Stitch count 172 x 226. Dark lines show placement for each Monthly
Marker (do not backstitch these lines).

PART 1—TOP LEFT



"Season 2 Border" ©2022 by Hands On Design, LLC. Permission is given to shops & stitchers to copy & distribute. Please keep the chart in its original format intact with logo & copyright information. Shops may kit the chart. Not for resale.

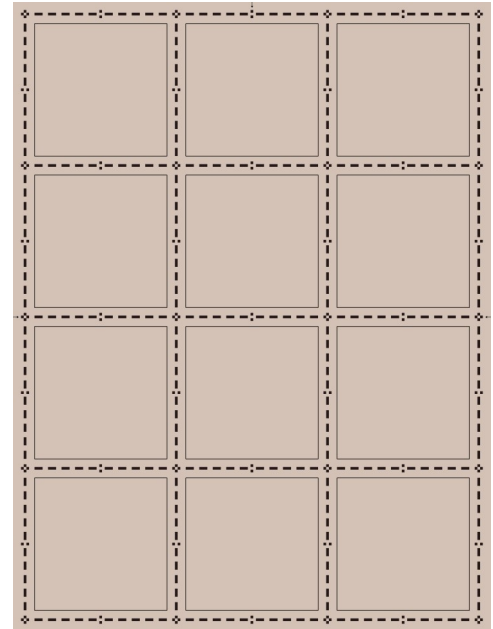
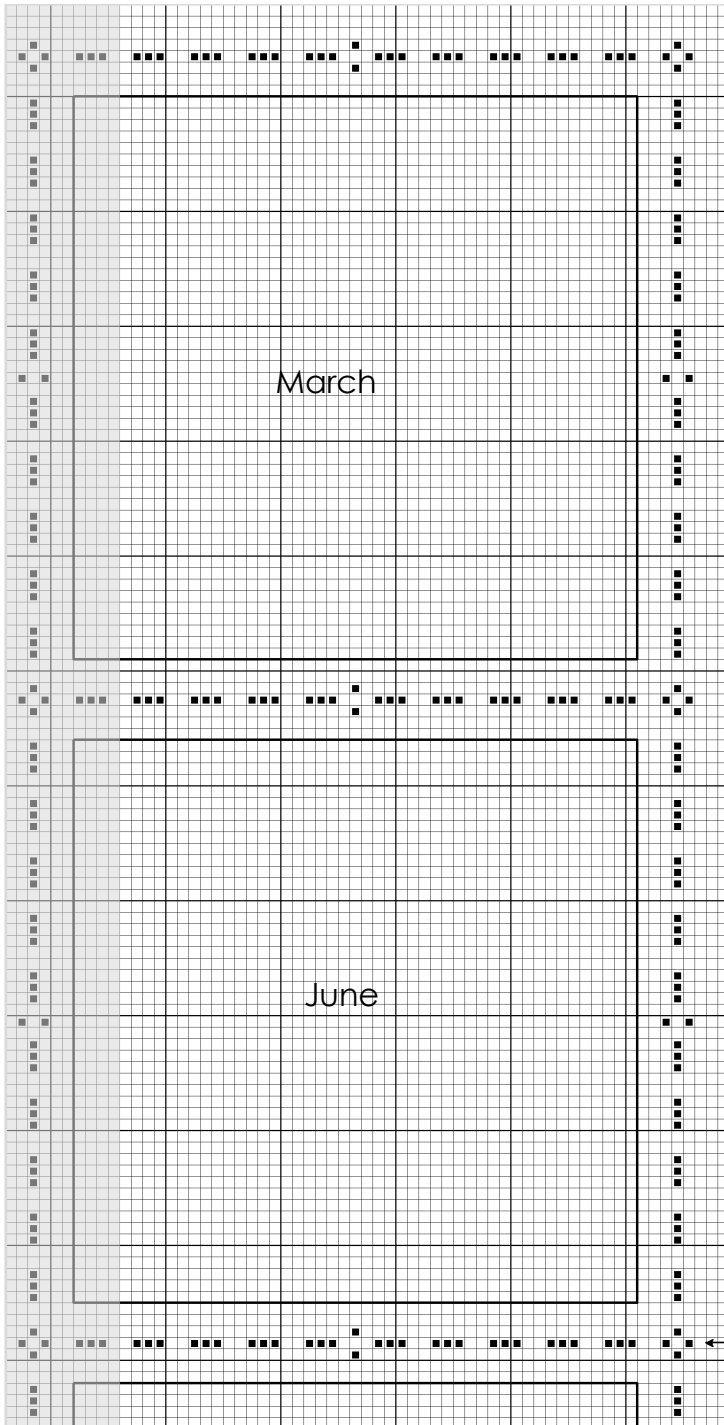
Cathy@HandsOnDesign.biz • www.HandsOnDesign.biz



Season 2—A Year of Celebrations border

Stitched 2 over 2 with 2 strands Classic Colorworks Black Coffee on 32ct Driftwood—
Fabrics by Stephanie. Stitch count 172 x 226. Dark lines show placement for each Monthly
Marker (do not backstitch these lines). Shaded area shows overlap from TOP LEFT chart.

PART 2—TOP RIGHT



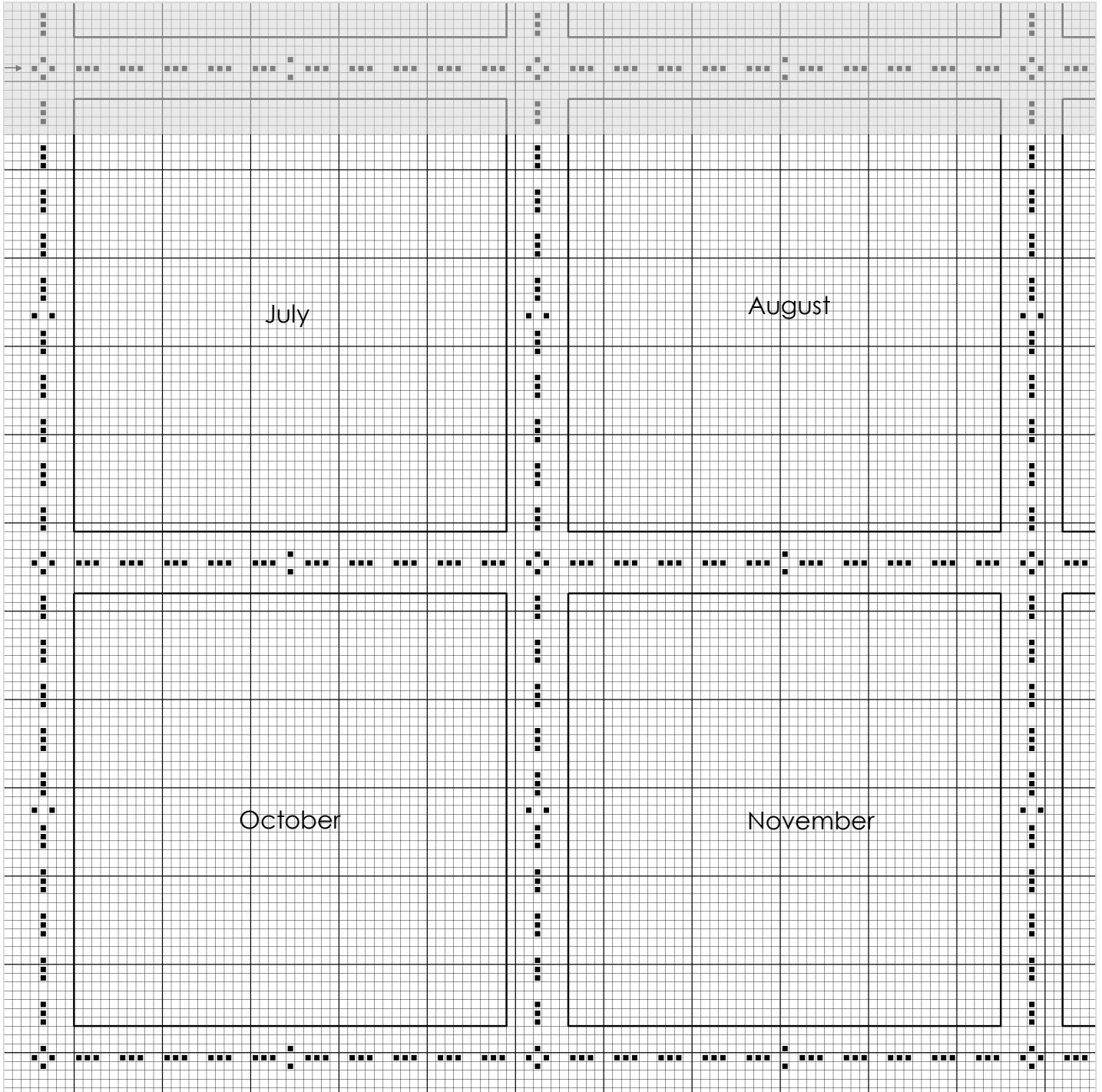
A look at what the border all
together for Season 2!



Season 2—A Year of Celebrations border

Stitched 2 over 2 with 2 strands Classic Colorworks Black Coffee on 32ct Driftwood—
Fabrics by Stephanie. Stitch count 172 x 226. Dark lines show placement for each Monthly
Marker (do not backstitch these lines). Shaded area show overlap from TOP LEFT.

PART 3—BOTTOM LEFT

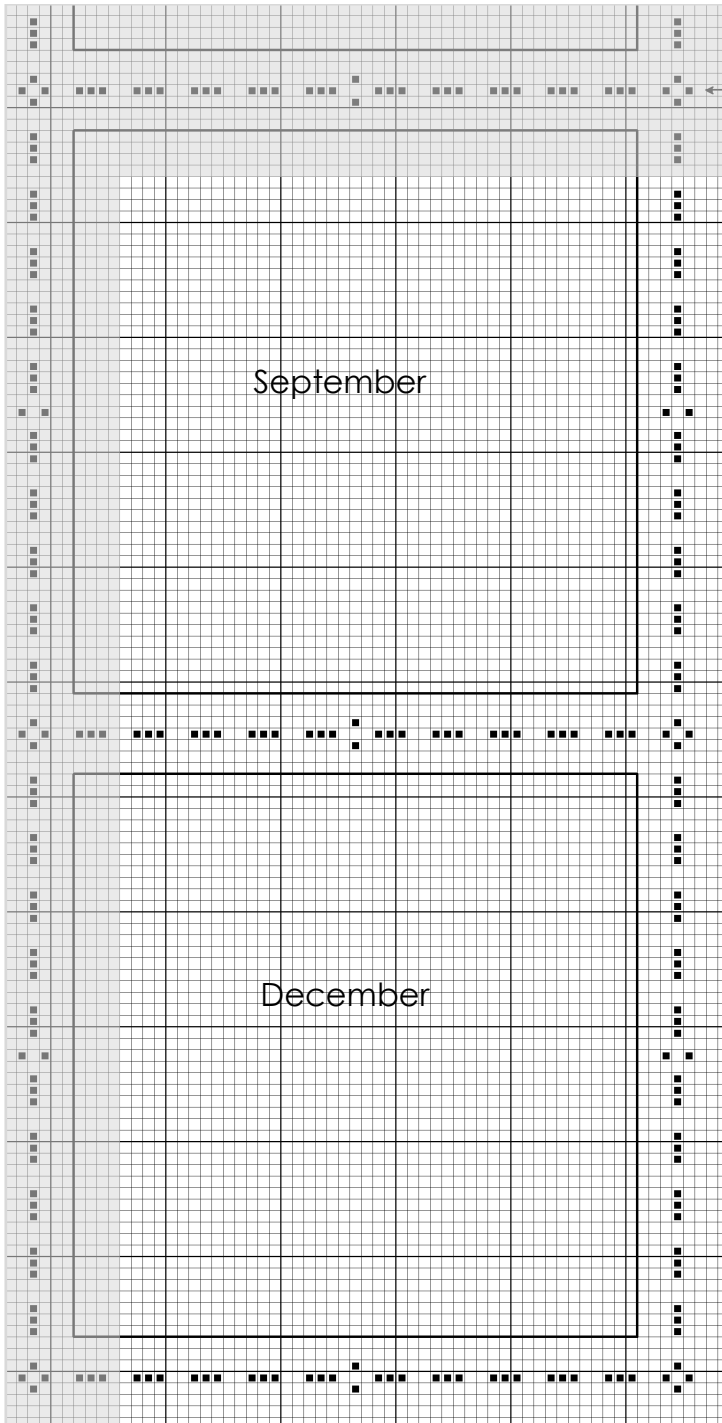




Season 2—A Year of Celebrations border

Stitched 2 over 2 with 2 strands Classic Colorworks Black Coffee on 32ct Driftwood—
Fabrics by Stephanie. Stitch count 172 x 226. Dark lines show placement for each Monthly
Marker (do not backstitch these lines). Shaded area shows overlap from TOP RIGHT &
BOTTOM RIGHT chart.

PART 4—BOTTOM RIGHT



"Season 2 Border" ©2022 by Hands On Design, LLC. Permission is given to shops & stitchers to copy & distribute. Please keep the chart in its original format intact with logo & copyright information. Shops may kit the chart. Not for resale.

Cathy@HandsOnDesign.biz • www.HandsOnDesign.biz