

# Well Rounded—Fall Sampler *chart correction*

Please find a 'correction' on the small sampler pinwheel for the Autumn trio.

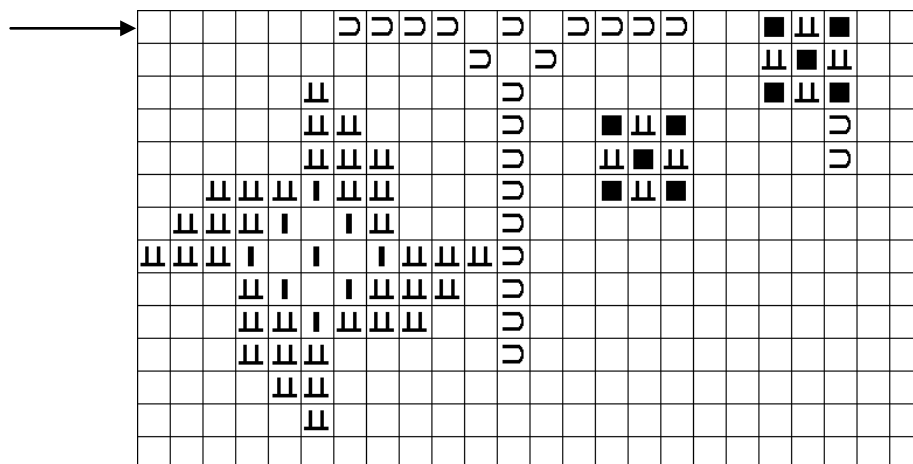
*The design in the chart is indeed what my 'final draft' was, but I sent the model stitcher the version just before the final edit. The design works either way—my apologies for not catching that sooner.*

Below you will find a portion of the chart with a baby pinwheel & 2 checkerboard 9-patches—what is on the cover model.

*If you wish to coordinate with the cover model, I have included that portion of the chart below: use the white bar that the lowest bird is sitting on to help you with the placement of the new objects. Nothing else in the pattern is changed. You will find the Color Key inside the chart.*

My apologies. The error has been corrected in the Well Rounded

Cathy—Hands On Design



The arrow points to the white 'bar' that the lowest bird is sitting on. Match that up to your stitching from the original chart and use this chart to coordinate with the cover model!