

Be a Pineapple—Stand Tall Tray *chart correction*

Often I make changes or additions as I stitch the model of a design. My model stitchers are fantastic at notating changes, errors & issues.

Me...not so much!

Small yellow buds & branches were left off of the chart for the Stand Tall Tray.

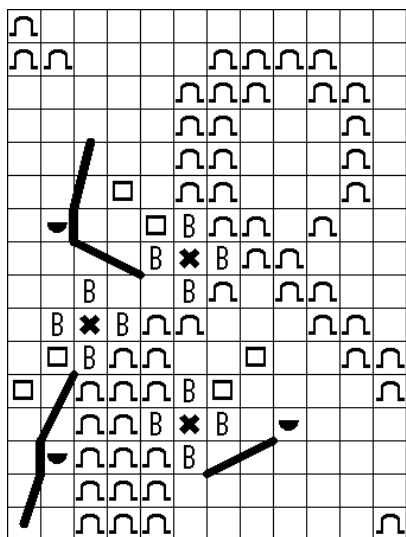
Specifically, in the '&' next to the flamingo & the white flowers above the 'SWEET' banner.

Below you will find portions of the chart with the flower & branch additions. I am not including the color key as you will find that in your chart.

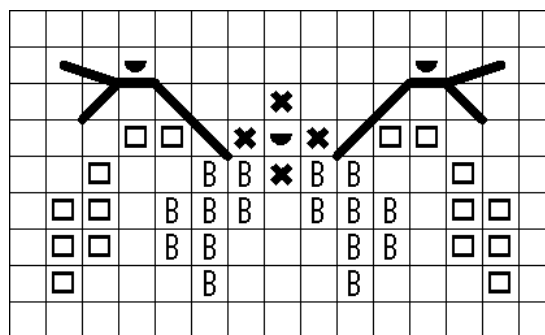
I'm still gonna' Stand Tall & Be Sweet, but I may have to give the Crown a 5 minute rest ;)

My apologies. The error has been corrected in the 2nd print run of the design.

Cathy—Hands On Design



Yellow flower & stem detail in the flowers of the '&'. A portion of the flamingo beak is shown for placement.



Yellow flower & stem detail in the white flowers above the 'Sweet' banner—should be added to all 3 flowers (flip chart for middle flower).