



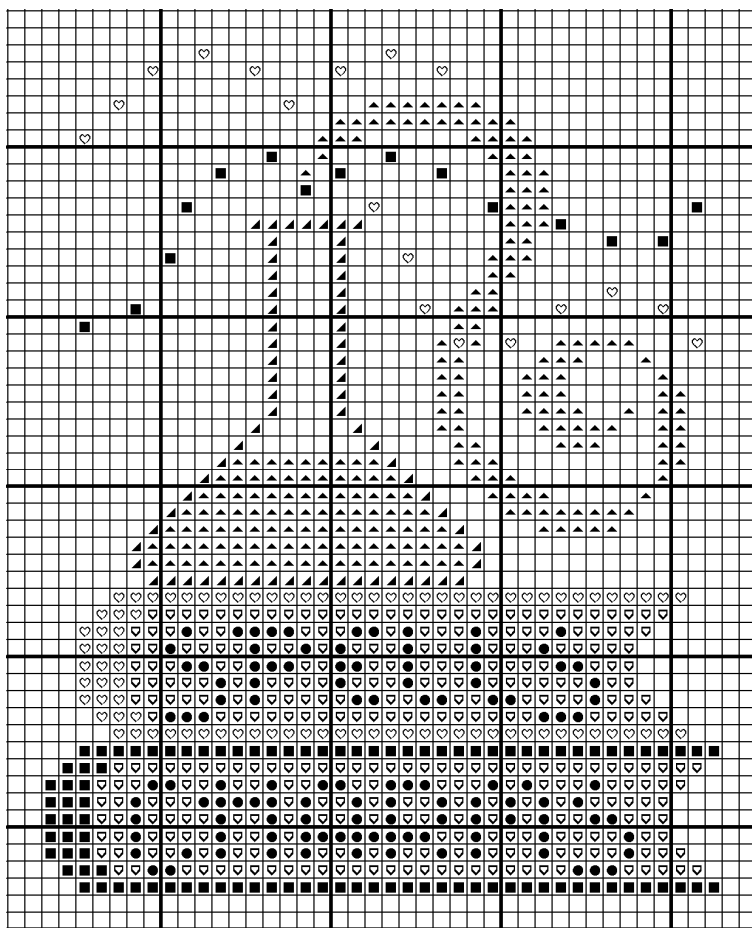
Favorite Brew:

what is buried deep in books of Spells & Charms? A little of this & a little of that to mix your favorite brew!

Model is stitched on 32ct Winter Wished & finished as a sweet bowl filler pillow with 1/2" Jack rick rack from Lady Dot Creates & JABC Pin-Mini: Favorite Brew (jpm451)

- ♡ CC Frog Legs [3819] ▲ CC Pumpkin Harvest [3853]
- CC Zack Black [317] ■ CC Boysenberry Jam [316]
- ▲ CC River Rocks [169] ♡ CC Finley Gold [3822]
- 242HL #4 Kreinik Braid for the Scary Sparkle trail floating out of the beaker
- ♡ 5835 #4 Kreinik Braid for the Scary Sparkle trail floating out of the beaker

"Favorite Brew" ©2019 by Cathy Habermann of Hands On Design Permission is granted for shops & guilds to copy & distribute in its original format. Not for resale. cathy@handsondesign.biz — www.handsondesign.biz



Favorite Brew:

what is buried deep in books of Spells & Charms? A little of this & a little of that to mix your favorite brew!

Model is stitched on 32ct Winter Wished & finished as a sweet bowl filler pillow with 1/2" Jack rick rack from Lady Dot Creates & JABC Pin-Mini: Favorite Brew (jpm451)

- ♡ CC Frog Legs [3819] ▲ CC Pumpkin Harvest [3853]
- CC Zack Black [317] ■ CC Boysenberry Jam [316]
- ▲ CC River Rocks [169] ♡ CC Finley Gold [3822]
- 242HL #4 Kreinik Braid for the Scary Sparkle trail floating out of the beaker
- ♡ 5835 #4 Kreinik Braid for the Scary Sparkle trail floating out of the beaker

"Favorite Brew" ©2019 by Cathy Habermann of Hands On Design Permission is granted for shops & guilds to copy & distribute in its original format. Not for resale. cathy@handsondesign.biz — www.handsondesign.biz

