

I Am Home

30 years has gone by in a flash—many happy memories, many more to come...enjoy this little Anniversary stitch.

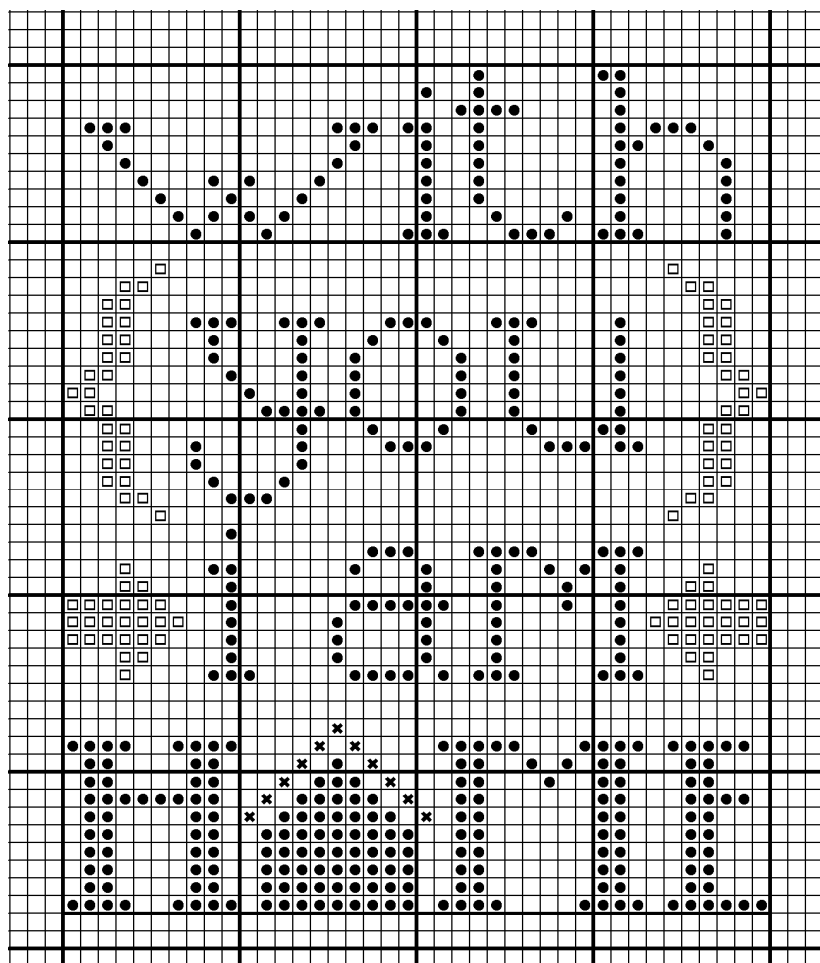
- Model stitched on 32ct WDW Tin Roof 40x49

□ DMC 597

● DMC 3865

✕ DMC 3712

I adorned my little Home with rick rack, baker's twine & a JABC pin from the NEST pinset (see justanotherbuttoncompany.com for ordering)



Finishing:

- Iron lightweight fusible web to back side of stitched piece. Trim linen 1" from the top edge of stitching & 3/4" on remaining 3 sides.
- Place rick rack along top edge & attach by sewing down the middle.
- Line coordinating cotton along the top (3"x5" piece needed). With right sides together. Sew through the seam created by attaching rick rack.
- Trim top corners of the cotton to create a roof line—finish in traditional pillow format.

Enjoy the stitch—**Cathy**